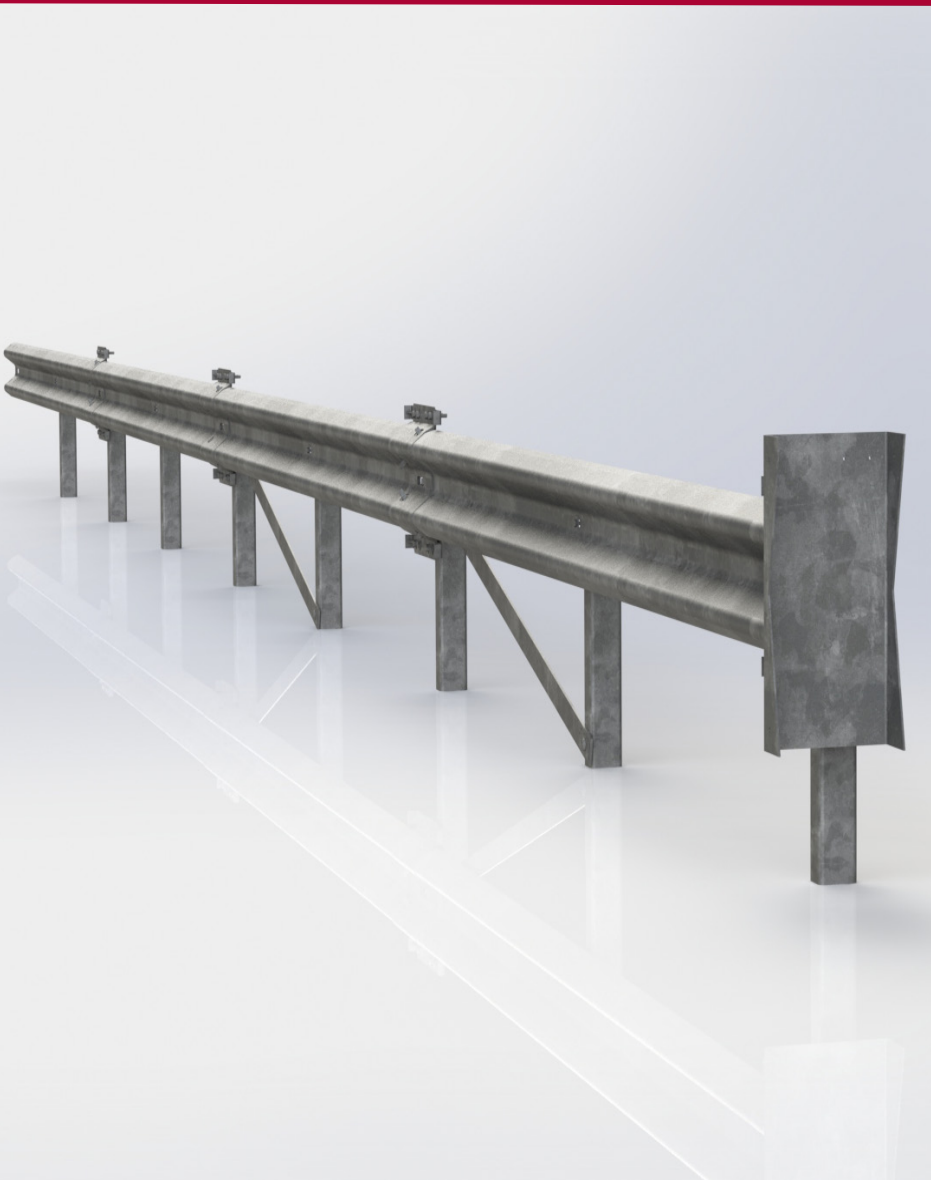


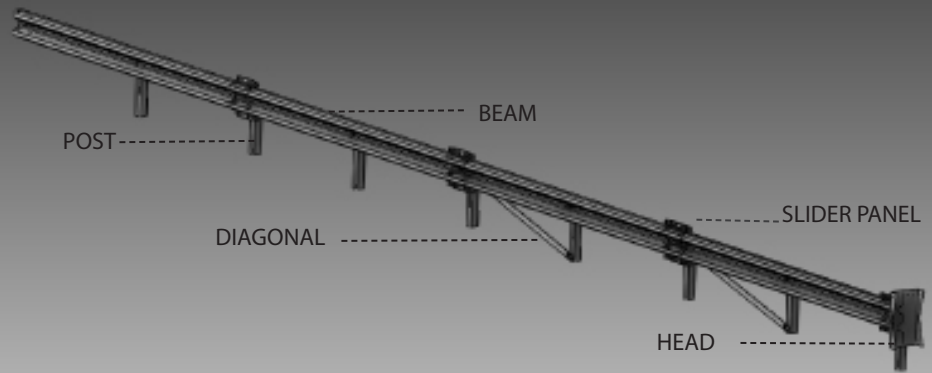
ATT® ABSORBING TEETH TERMINAL | END TERMINAL

- NEW PATENT PENDING ENERGY ABSORBING TECHNOLOGY
- MEETS ENV1317-4 P4 110 KM/PH CRITERIA
- EASY INSTALLATION WITHOUT A CONCRETE FOUNDATION



PHYSICAL SPECIFICATIONS

Classification	Redirective
Length	16,270 m
Width	330 mm
Height	750 mm
Weight	approx. 350 kg
Criteria	ENV1317-4 110km/h



ATT® END TERMINAL REDIRECTIVE PERFORMANCE

The ENV1317-4-compliant ATT® guardrail end terminal from Snoline features the next level of impact performance at a competitive price. The system utilizes a tooth-based cutting system to decelerate errant vehicles impacting at up to 110 km/h. When impacted head-on, deceleration is controlled by teeth cutting into the downstream guardrail panels. When a side impact occurs, the system can redirect a motorist away from the hazard. The ATT® guardrail terminal is easy to install and does not require a foundation. It utilizes many standard guardrail components, minimizing inventory and maintenance costs.

FAQ's

What type of barrier can be shielded using the ATT® Terminal?

The ATT® Terminal can be used to shield existing guardrail barriers of the same height, profile, and size. Otherwise, transitions should be used to adapt it to specific cases. Contact the Snoline technical department for more information on this point.

What are the maintenance requirements for the terminal?

The ATT® Terminal requires periodic inspections. After an impact, Snoline recommends a full replacement of the system.

How easy is it transport and install the ATT® Terminal?

The ATT® Terminal is easy to install and weighs approximately 350 kg. A qualified three-person crew can install an ATT® Terminal in about one hour.

FEATURES

- » New patent pending energy absorbing technology
- » Meets ENV1317-4 Criteria Class P4 - speed 110 km/h
- » No foundation required
- » Typically installs in 1 hour
- » Nose options available

WHERE TO USE

As a shield to protect errant motorists from dangerous guardrail ends

DISTRIBUTED BY:



SNOLINE S.p.A.

Via F. Baracca 19/23 • 20056 Trezzo sull'Adda (MI) • Italia • Tel. +39 02909961 • e-mail: info@snoline.com
 General details for the ATT Terminal System are subject to change without notice to reflect improvements and upgrades.
 Additional information is available from SNOLINE S.p.A. © Lindsay Transportation Solution