



MAGNETIC FLOW METER | IM3000

## The Lindsay Advantage

Zimmatic® by Lindsay offers proven systems and products that are built to be strong, long-lasting, durable and easy to use for growers who need highly efficient irrigation solutions. These systems can be enhanced with a family of integrated plug-and-play add-ons.

Growers around the world rely on Zimmatic's innovative technology support by a network of knowledgeable dealers to add value, reduce risk and take full advantage of every growing season.

To learn how the magnetic flow meter can make your operation more profitable, visit [www.growsmart.com](http://www.growsmart.com) or contact your local Zimmatic® by Lindsay dealer.

To see the magnetic flow meter video, go to [youtube.com/lindsayirrigation](http://youtube.com/lindsayirrigation)



	<p><b>THE LINDSAY ADVANTAGE</b>          DURABLE • RUGGED • EASY TO USE • INTEGRATED TECHNOLOGIES •          BROADEST LINE OF SOLUTIONS</p>			

2222 N. 111th St., Omaha, NE 68164 • 1-800-829-5300 • 1-402-829-6800 • [www.lindsay.com](http://www.lindsay.com)

**Lindsay USA:** 2222 N. 111th St., Omaha, NE 68164 • **Lindsay Africa:** 6 Talana Close, Sacks Circle, Bellville South, 7530, South Africa

**Lindsay Brazil:** Rodovia Adhemar Pereira de Barros - SP 340 KM 153, 5 - Caixa Postal 1001 CEP 13804-830, Mogi-Mirim, Sao Paulo, Brazil

**Lindsay Europe:** L'Epinglerie 72300 La Chapelle d'Aligné, France • **Lindsay International BV:** Weena 278, Tower B, 7th floor, 3012 NJ Rotterdam

**Russian Branch of Lindsay International BV:** Russia, 350063 Krasnodar City, ul.Sovetskaya, 30, office 1202

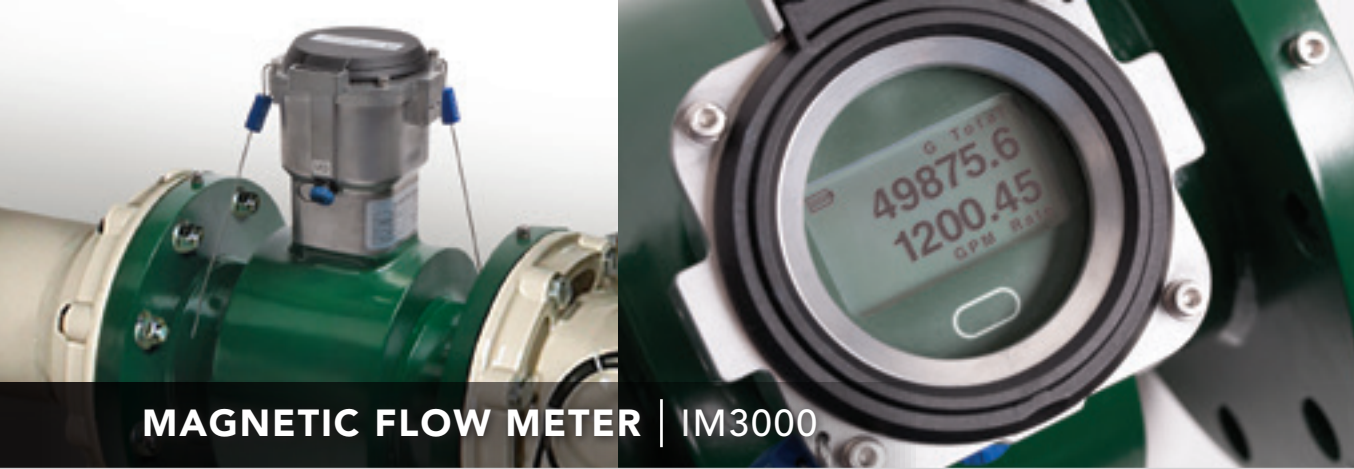
**Lindsay Sulama (Turkey):** Karamehmet Mahallesi, Avrupa Serbest Bölgesi, 4.Cadde No3 Ergene-Tekirdag/TURKEY

**Lindsay China Sales Office:** Room 403, Building C Beijing Lufthansa Center Number 50, Lianmaqiao Road Chaoyang District Beijing, China 100125

**Lindsay Australia Warehouse:** Lindsay International (ANZ) Pty Ltd 19 Spencer Street Toowoomba QLD 4350

THE ACCURATE SOLUTION FOR  
MANAGING WATER USE.





**MAGNETIC FLOW METER | IM3000**

Ideal for pivot and micro irrigation

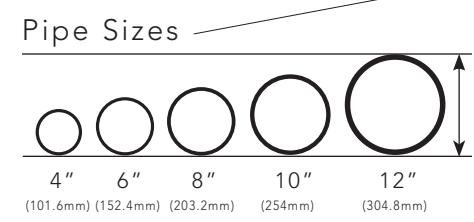
# Save resources with the highly accurate magnetic flow meter

Water management and conservation is an ever-increasing concern for growers. The Growsmart® by Lindsay magnetic flow meter takes the guesswork out of water usage while saving time, water, energy and money.

## FLOW METER'S Benefits

Compared to propeller flow meters, the Growsmart magnetic flow meter does not have any moving parts such as propellers or bearings that may break, causing interruptions in measurement and resulting in extra costs. Plus, the magnetic flow meter will not be affected by debris.

- Superior IP68 enclosure seal
- No moving parts to replace
- No flow obstruction
- Range of sizes
- Minimal straight pipe run required
- Remote management capabilities with FieldNET® by Lindsay
- Optional battery pack featuring longer life than most competitive models



When water goes through a magnetic field it creates a small voltage pulse. By measuring that voltage, the magnetic flow meter calculates how much water is flowing through the pipe.

## Enhance with FieldNET

FieldNET is the industry-leading wireless management tool that allows you to remotely control entire irrigation systems.

With FieldNET-ready capabilities, the Growsmart magnetic flow meter combines with FieldNET to give you real-time, convenient access for up-to-date status, alerts and reporting.



- Easy-to-use interface
- Convenient mobile app
- Insightful, color-coded status icons
- Text message alerts for high flow, low flow & battery life
- Reports and historical archiving



## APPLICATIONS

- Irrigation
- Wells
- Lagoons
- Agriculture Automation

FLOW MEASUREMENT	
<b>Accuracy (Confirmed by ICWT)</b>	10% – 100% of max flow: ±1% of reading Cutoff – 10% of max flow: ± 2% of reading
<b>Measuring Frequency</b>	Battery power: 1/15 Hz External power: automatically proceeds with full-speed measurement, with frequency up to 5.5 Hz. Increased measuring frequency results in more accurate and real-time readings.
<b>Range</b>	.3 ft/s – 39 ft/s (0.1m/S – 12m/S)
WARNINGS	
<b>Empty Pipe</b>	Supported
<b>Coil Open Circuit</b>	Supported
BATTERY POWER	
<b>Battery Life</b>	4 – 6 Years
<b>Battery Level Testing</b>	Supported
<b>Battery Replacement</b>	Supported
<b>Measure During Battery Swap</b>	Not Supported
EXTERNAL POWER	
<b>Voltage Range</b>	6.5 – 32Vdc
<b>Auto Switch to External Power</b>	Supported
<b>External Power Indicator</b>	Yes
USER INTERFACE	
<b>Buttons</b>	Can support 1 – 2 buttons (reed switch)
<b>Display Contents</b>	Flow rate, total, battery voltage, low battery warning, empty pipe warning, flow velocity/direction
<b>Display Digits</b>	Rate: 6 digits; Total: 9 digits
<b>Rate Units</b>	Gallon/Minute, Liter/Minute, Liter/Second, Cubic Feet/Minute, Cubic Meter/Hour, Million Gallon/Day, Mega Liter/Day
<b>Total Units</b>	Acre-Inches, Acre Feet, Gallon, Gallon x 1000, Liter, Liter x 1000, Mega Liter, Cubic Meters, Cubic Meter x 1000, Cubic Feet, Cubic Feet x 1000
<b>Unit Settings</b>	Set according to customer requirement before shipment
<b>Unit Switching</b>	Can be switched by user defined button
OUTPUT	
<b>Frequency (opt. iso., dry contact)</b>	With external power, max frequency 1000Hz
<b>Pulse (opt. iso., dry contact)</b>	
<b>Communications</b>	Supported, requires related hardware
WORKING CONDITIONS	
<b>Temperature</b>	Operating: 10.4F – 122F (-12°C – 50°C) Storage: -40F – 140F (-40°C – 60°C)
<b>Pressure</b>	150 psi (10.3bar)
<b>Conductivity of Medium</b>	>20uS/cm
INSTALLATION METHOD	
Flanged ANSI	
PROTECTION RATING	
Tamper Proof IP68 Enclosure	